

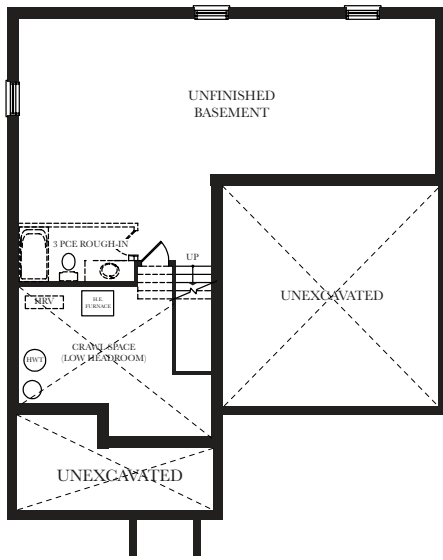


## The SYCAMORE

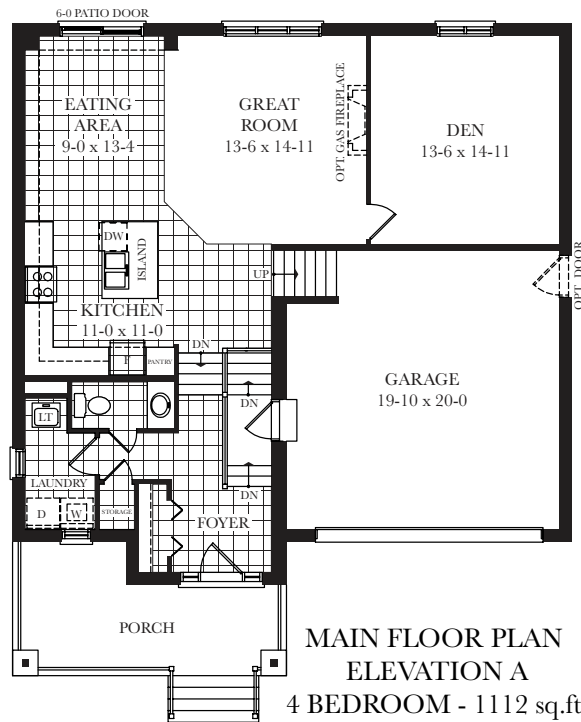
- 3 BED Elev. A - 2142 sq.ft.
- 3 BED Elev. B - 2196 sq.ft.
- 4 BED Elev. A - 2581 sq.ft.
- 4 BED Elev. B - 2635 sq.ft.



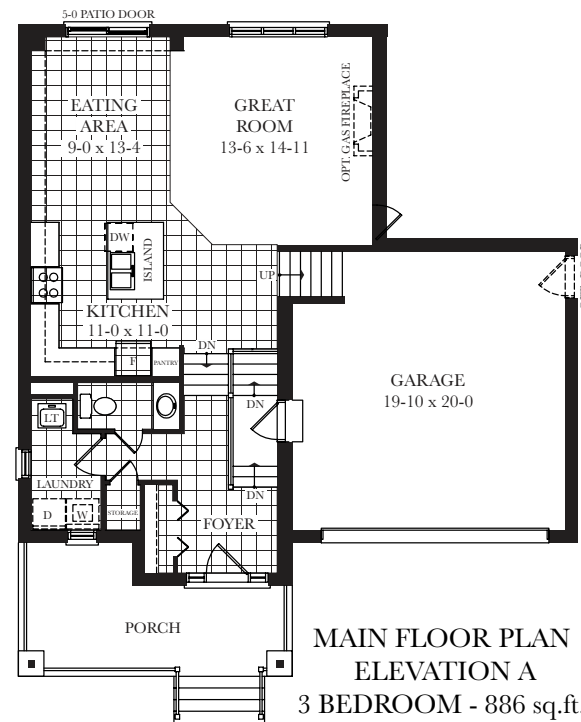




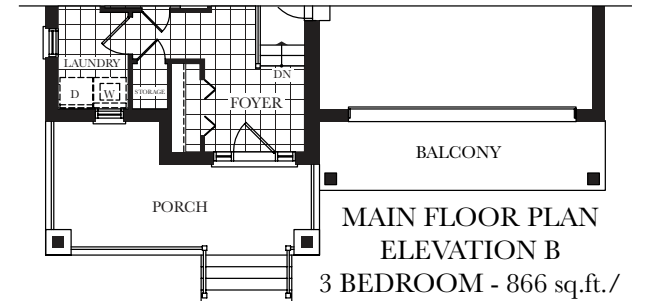
BASEMENT PLAN 4 BEDROOM



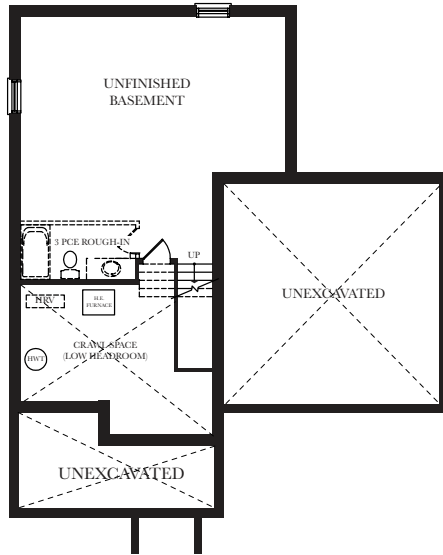
MAIN FLOOR PLAN  
ELEVATION A  
4 BEDROOM - 1112 sq.ft.



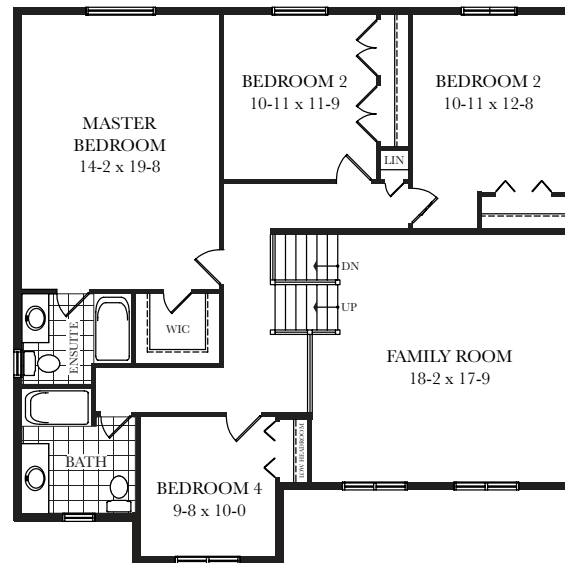
MAIN FLOOR PLAN  
ELEVATION A  
3 BEDROOM - 886 sq.ft.



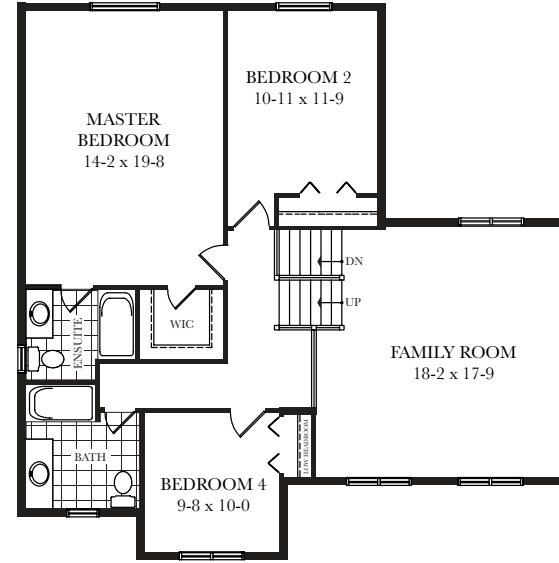
MAIN FLOOR PLAN  
ELEVATION B  
3 BEDROOM - 866 sq.ft./  
4 BEDROOM - 1112 sq.ft.



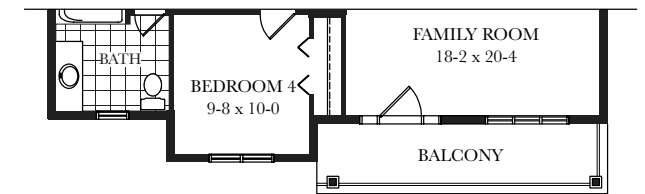
BASEMENT PLAN 3 BEDROOM



UPPER LEVELS PLAN ELEV. A  
4 BEDROOM - 1469 sq.ft.



UPPER LEVELS PLAN ELEV. A  
3 BEDROOM - 1256 sq.ft.



UPPER LEVELS PLAN ELEV. B  
3 BEDROOM - 1309 sq.ft./  
4 BEDROOM - 1523 sq.ft.

# The SYCAMORE

Specifications and plans are subject to change without notice. Actual usable floor space may vary from stated floor area. Illustrations depicted are an artist's concept only and may show optional features which may not be included in the base price. Ask your sales representative for more information. E&OE.

